

Restoring function in balanced oral environments

Dr Clarence Tam



1. Pre-operative situation featuring an old composite restoration on 34O and an open contact between 34 and 35 leading to gingival and patient cognitive irritation from the chronic food trap.



2. Intraoperative view A: Excavation of the old restoration and uncovering the top of the proximal carious lesion showing clear extension past the DEJ into dentin.



3. Completed Class II preparation and sectional matrix assembly in place on 34DO.



4. Mini 0.25mm horizontal layers, individually fully-cured were created using A2 G-aenial Flo X, a nice low viscosity flowable composite perfect for precision lining the base of the Class II proximal box floor and cavosurface region.



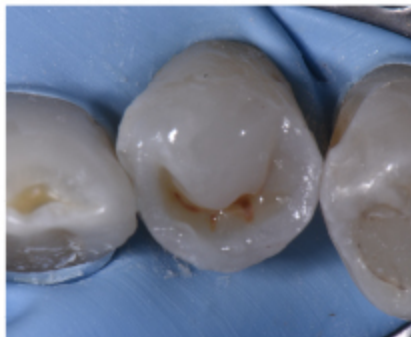
5. Marginal ridge layered to full anatomic height using Essentia LE.



6. Dentin mass composed of Essentia DD placed and sculpted.



7. Essentia Modifier RBM was used in the dentin fissures prior to layering of enamel. This approach allows the color to subtly show through, the "lingerie effect" (Clarence Tam, 2017)



8. Buccal lobes created using Essentia LE.



9. Lingual lobes created using Essentia LE.



10. Mid-Mesial lobe layered using Essentia LE.



11. Immediate post-operative view after final stage polishing using GC Diapolisher Paste.



12. Final post-operative view showing integration with occlusion, closure of open contact and compatibility of contours and restoration with existing chrome cobalt partial denture.